

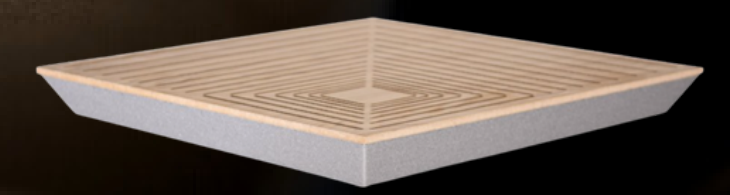
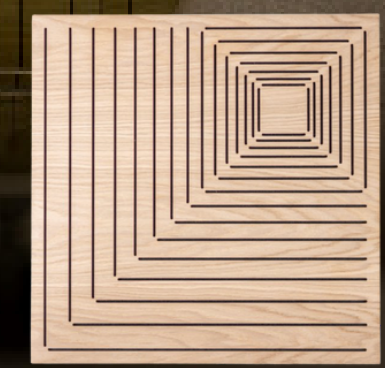


# ACER Acoustic Panel



-  Excellent acoustic performance
-  Custom arrangement options
-  Easy installation



## Overview

The ACER Panel is an acoustic lining for achieving optimum sound absorption in the mid-range frequency (300 - 600Hz).

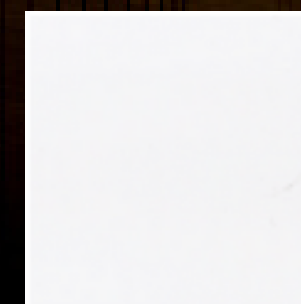
The location, depth, and length of the openings, type of material and finishing plane, the cellular structure of the porous material, the total thickness of the panel, as well as other parameters, are the result of thorough research and experiments.

The ACER panels are suitable for offices, stores, restaurants, bars, recording studios and home cinemas.

## Customization

The clean and minimalistic design of ACER makes it suitable for custom design and individual layout to achieve original architectural solutions. The rotation of the panel will create different arrangements and allow multiple design options to create a centerpiece or as a whole wall lining.

### VENEER COLORS



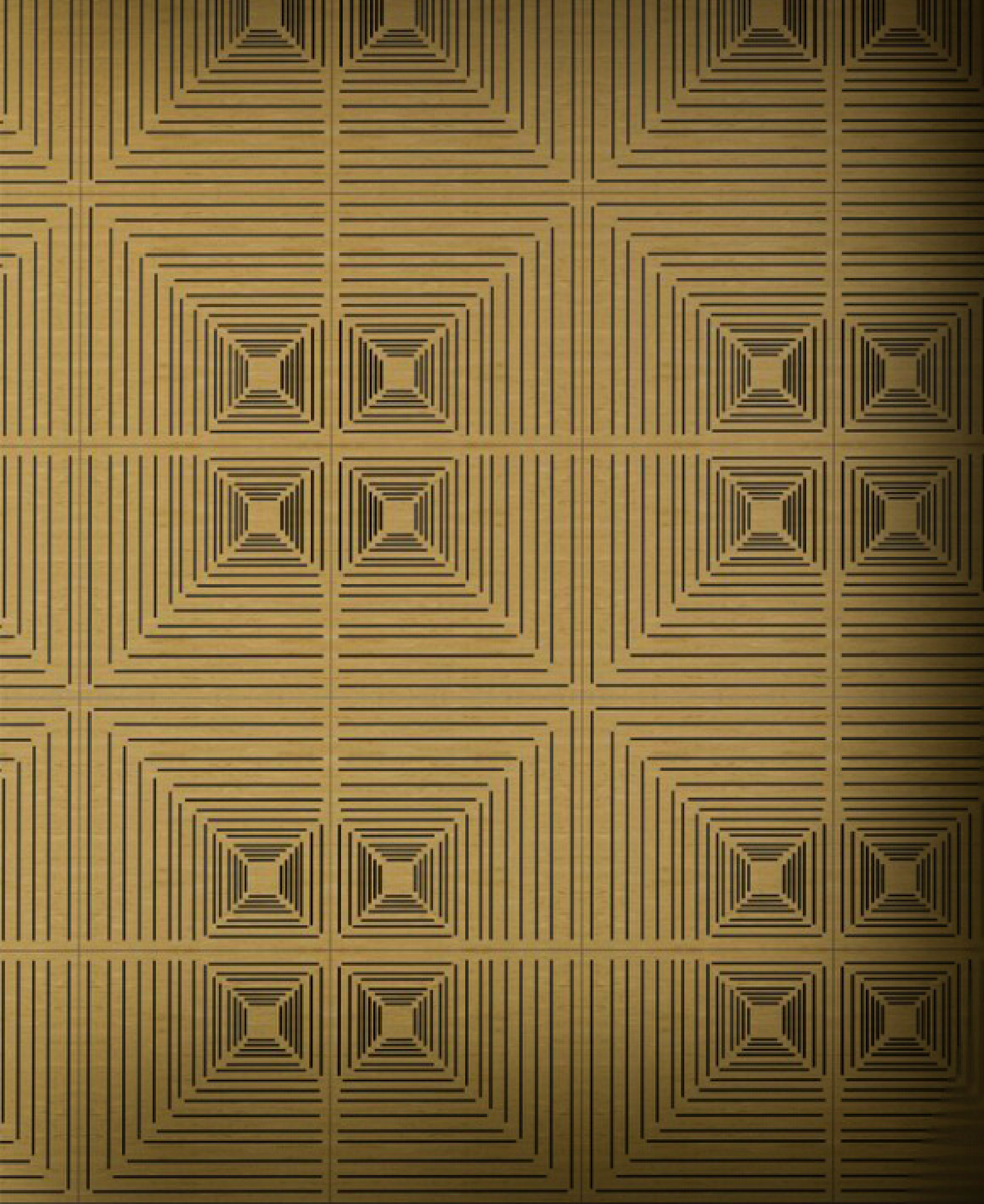
V1

Matte White



V2

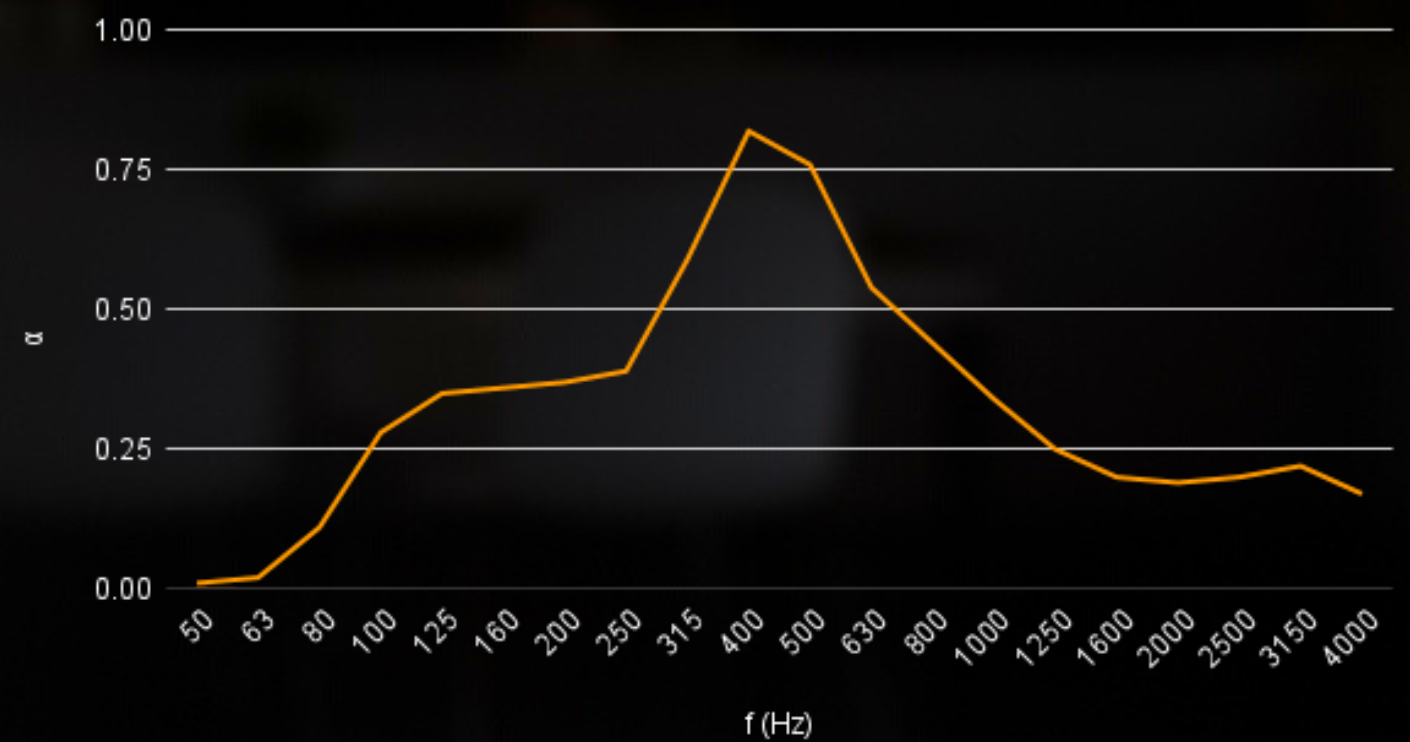
Light Oak

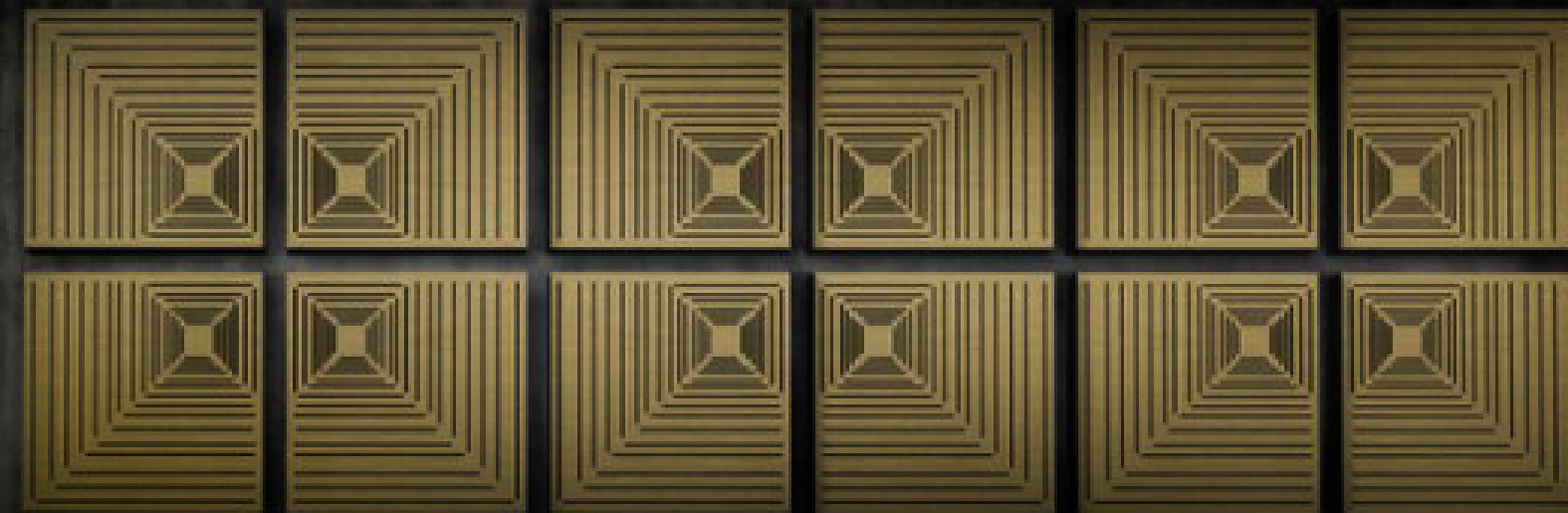


## Technical Information

- Material:** Perforated MDF maple finish and acoustic foam
- Color:** V1 & V2 from DECIBEL veneer options
- Dimensions:** 20" x 20"
- Thickness:** 2"
- Weight:** 3.5 lbs per unit
- Perforation:** 10%
- Installation:** Glued on walls or ceilings

### Coefficient of Sound Absorption





## Optimal Packaging

<b>Packaging:</b>	Cardboard box
<b>Box dimensions:</b>	21" x 21" x 21"
<b>Weight:</b>	35 lbs
<b>Contains:</b>	9 pieces
<b>Storage:</b>	Flat-lying indoors in a cool and dry place, non-stackable

## Installation

Step 1: Clean the wall to remove dust.

Step 2: Plot a horizontal line to level the panels.

Determine the position of the first panel and plot a vertical line perpendicular to the horizontal, which will serve as the start of the panel arrangement.

Step 3: Apply adhesive on the backside of the panel. Once applied, let the adhesive expand for 30 seconds.

Step 4: Place the panel and press it against the wall for 2 minutes.

Step 5: Subsequent panels are fitted with a little gap between each other.

Leave your panel arrangement to dry for at least 24h.

Do not clean the panels during the drying process.

Do not lean furniture or other heavy items on the newly glued panels.

We advise to prop up the lower level panels with wooden beam during the drying process.