

BEEELIVE Acoustic Panel



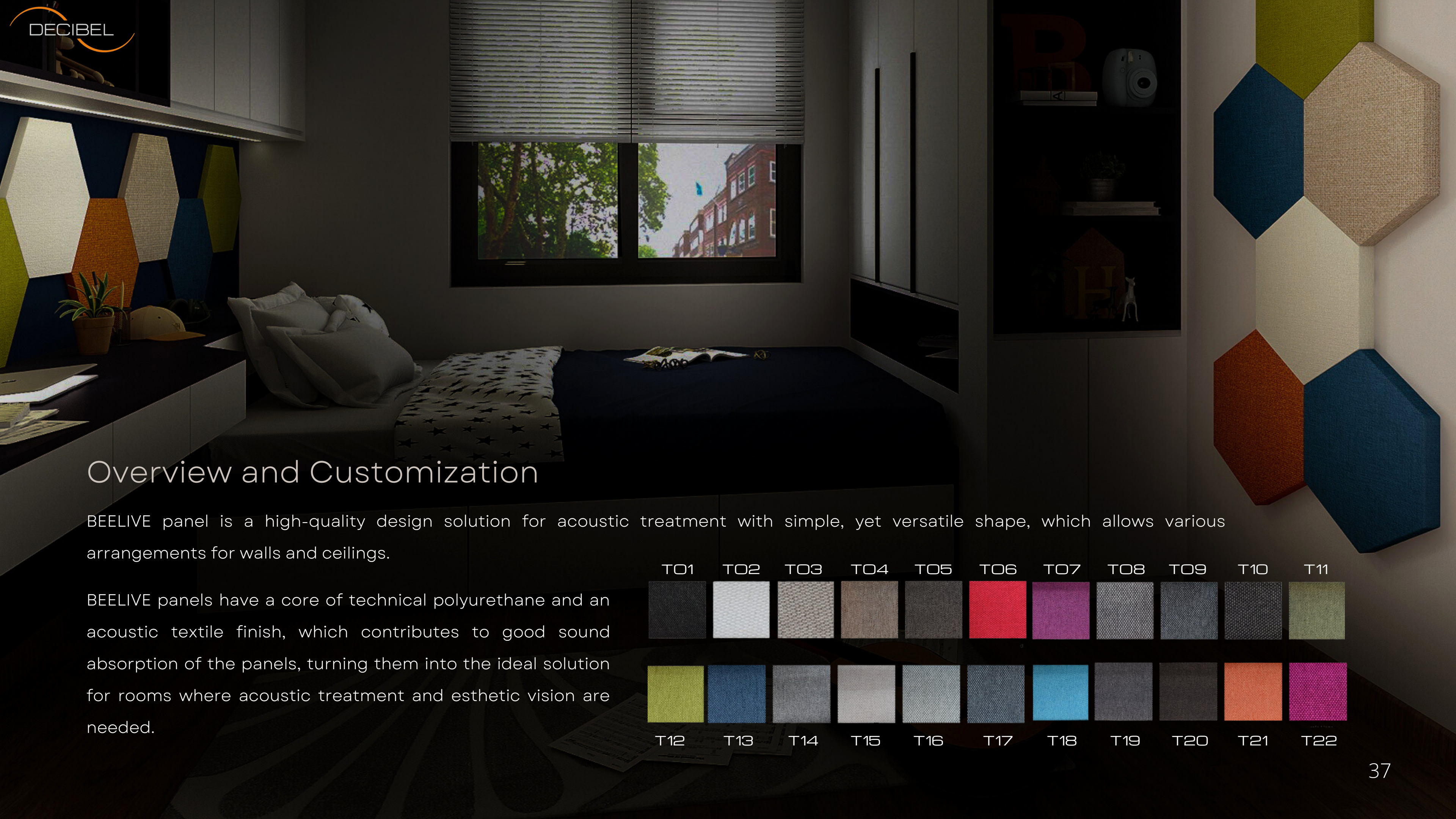
22 colors



Unlimited design options



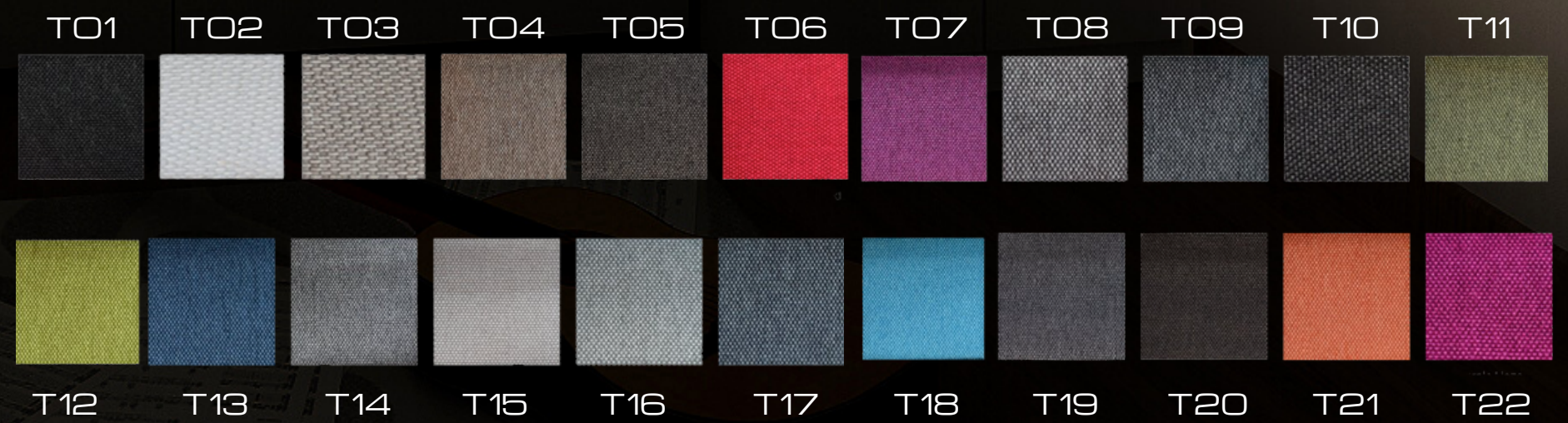
Easy installation



Overview and Customization

BEELIVE panel is a high-quality design solution for acoustic treatment with simple, yet versatile shape, which allows various arrangements for walls and ceilings.

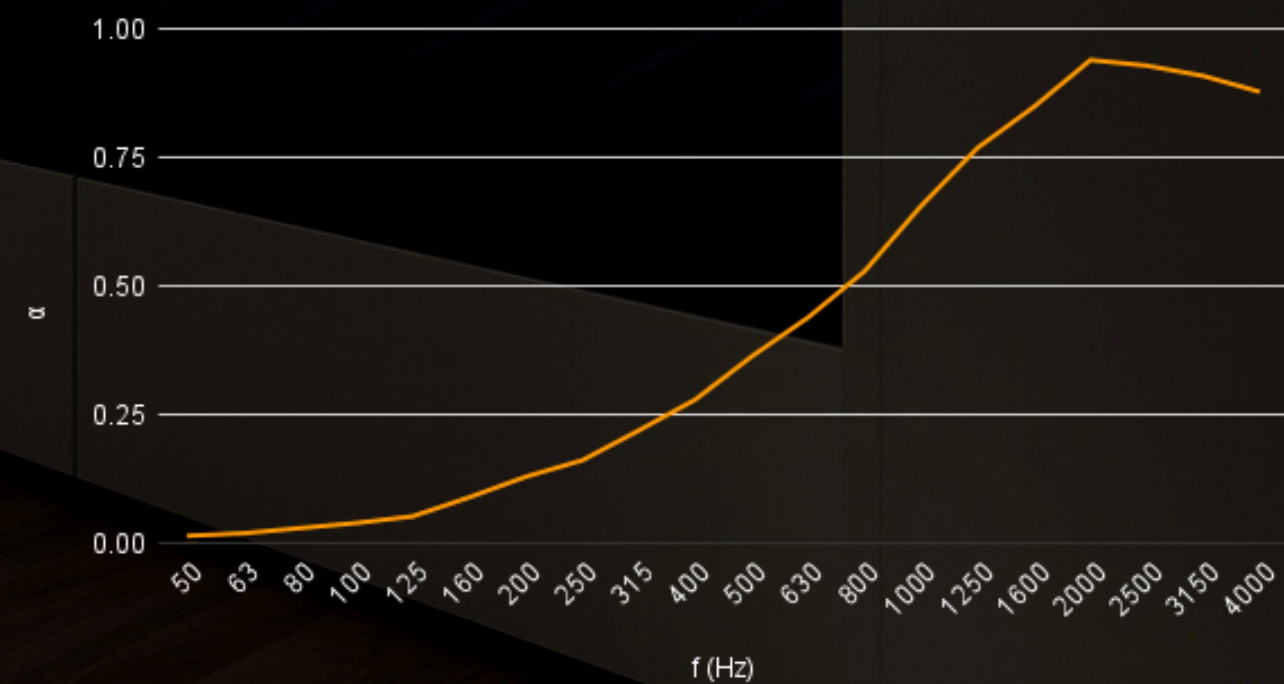
BEELIVE panels have a core of technical polyurethane and an acoustic textile finish, which contributes to good sound absorption of the panels, turning them into the ideal solution for rooms where acoustic treatment and esthetic vision are needed.



Technical Information

Material:	Acoustic foam and acoustic fabric
Color:	22 colors from the catalog (T01-T22)
Dimensions:	9.5" x 16" x 18.5
Thickness:	1.5"
Weight:	0.7 lbs
Installation:	Walls and ceilings through direct gluing or hanging
Maintenance:	Clean with a damp cloth

Coefficient of Sound Absorption



Optimal Packaging

Packaging:	Cardboard box
Box dimensions:	21" x 21" x 21"
Weight:	9 lbs
Contains:	12 pieces
Storage:	Flat-lying indoors in a cool and dry place, non-stackable

Installation

Step 1: Clean the wall to remove dust.

Step 2: Plot a horizontal line to level the panels.

Determine the position of the first panel and plot a vertical line perpendicular to the horizontal, which will serve as the start of the panel arrangement.

Step 3: Apply adhesive on the backside of the panel. Once applied, let the adhesive expand for 30 seconds.

Step 4: Place the panel and press it against the wall for 2 minutes.

Leave your panel arrangement to dry for at least 24h.
 Do not clean the panels during the drying process.
 Do not lean furniture or other heavy items on the newly glued panels.
 We advise to prop up the lower level panels with wooden beam during the drying process.